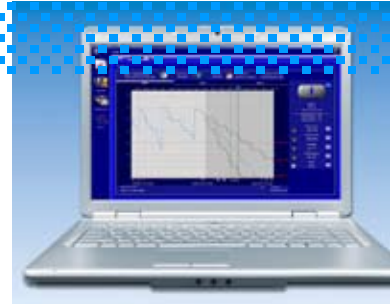


Remote Sentry™

Inventory Management Program



Better management of your inventory

Remote Sentry™ measures the bulk volume in a tank and transmits that information to facilitate automated replenishment. Remote Sentry:

- Eliminates manual measurement and associated costs
- Improves inventory accuracy
- Eliminates emergency deliveries
- Reduces inventory levels and increases inventory turns
- Automates the order process
- Reduces paperwork

Remote Sentry handles your inventory data so that you can fully concentrate on your business.



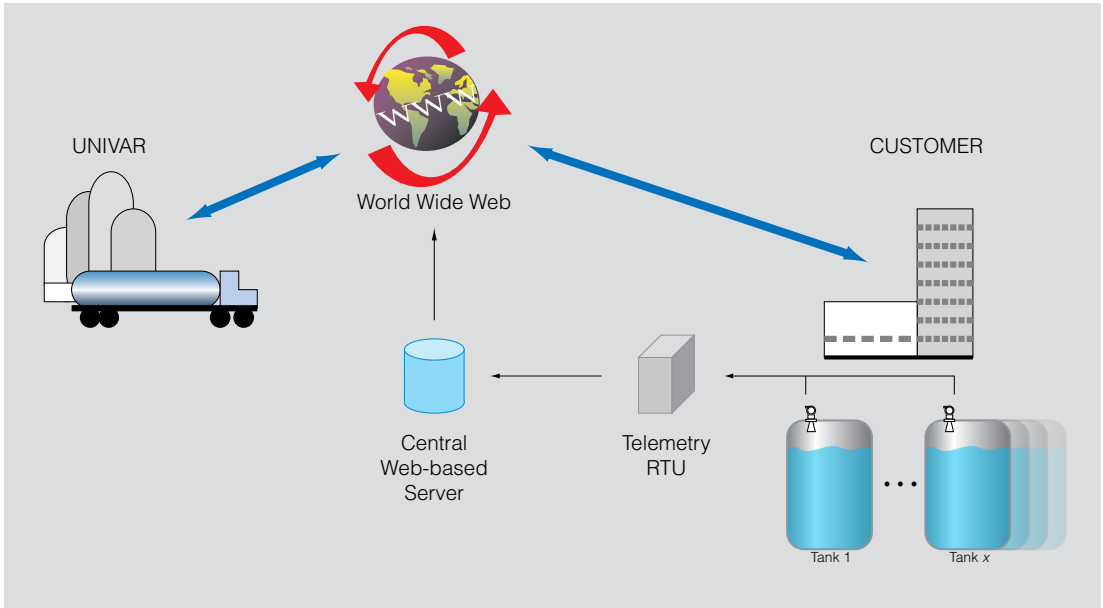
Why Remote Sentry™?

- How much time goes by before inventory data from the tank reaches the office?
- How much material has been added or withdrawn during this time?
- Do you have enough material for today's orders?
- Is production threatened by a lack of material?
- Do you tie up too much capital in inventory?
- How much time do you spend with order handling?

We have the proven solution to the inventory management challenges your company faces every day. Contact a Univar representative today to find out more.



How It Works



Measurements from your tanks are communicated to a telemetry RTU, which transmits the data to a central web-based server.





Tank 1

- Asset List
- My Assets
- Configuration
- REPORTS

Tank 1

ABC Corporation
Dartmouth, NS, Canada



Data Status
Normal



Level Status
Normal



Fill [744 t]
2009-03-19 08:00

Scheduled Delivery
NormalLabel

Plot

Table

Notes



Comments: Tank 1

This is a nice tank

Timezone
Eastern T

Inventory Management

Inventory Management

With Remote Sentry, your inventory data is captured 'round the clock'. Measurements from your tanks are communicated to a telemetry RTU, which transmits the data to a central web-based server. This server has been configured to store the critical data, including tank identification, material within the tank, the level limits for each tank, reorder points and more.

The server communicates the data, making it possible to send alarms via e-mail, confirm the health of a measuring device, even automatically activate the replenishment of your supply.

You may access your tank data at any time from any computer, by visiting a specific web address which you will be provided. Internet Explorer 6.0 or later is used for viewing your data which is displayed on an HTML page. Different types of transmission like Ethernet, modem, GSM/GPRS, CDMA and satellite may be used and combined at your location, depending upon the available infrastructure.

Safety

Your data is safe, secure and only accessible by you and Univar. Password protection and the latest encryption technologies make security breaches virtually impossible.

Advantages of Remote Sentry

- Eliminates manual measurement and associated costs
- Improves inventory accuracy
- Eliminates emergency deliveries
- Reduces inventory levels and increases inventory turns
- Automates the order process
- Reduces paperwork

Inventory Management Features



Tank Details Page

- Quickly see tank details such as: tank capacity, current quantity of product in the tank, type of product in the tank, and the date and time of the last reading of the tank's data
- View a history of data for the selected tank, and estimated or probable future data for the selected tank (in graphical and table form)
- View the date upon which the next delivery is (or was) scheduled for this tank, dates on which tank should be filled, and dates upon which the tank will be empty if not filled

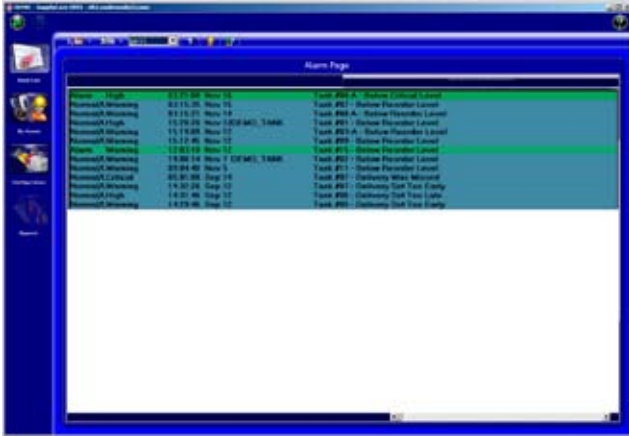
The screenshot shows the 'Tank Schedule' page with a table titled 'Delivery Schedules'. The table has columns for Name, Status, Product, Parameters, Volume, Capacity, and Schedule. The data is organized into rows for different tanks and their scheduled deliveries.

Name	Status	Product	Parameters	Volume	Capacity	Schedule
AKC Corporation	Tank 1	None	Pressure 0	Normal	100 PIA	0.0000 gal (0)
AKC Corporation	Tank 2	None	Pressure 0	Normal	100 PIA	0.0000 gal (0)
AKC Corporation	Tank 3	None	Pressure 0	Normal	100 PIA	0.0000 gal (0)
AKC Corporation	Tank 4	None	Pressure 0	Normal	100 PIA	0.0000 gal (0)
AKC Corporation	Tank 5	None	Pressure 0	Normal	100 PIA	0.0000 gal (0)
AKC Corporation	Tank 6	None	Pressure 0	Normal	100 PIA	0.0000 gal (0)
AKC Corporation	Tank 7	None	Pressure 0	Normal	100 PIA	0.0000 gal (0)
AKC Corporation	Tank 8	None	Pressure 0	Normal	100 PIA	0.0000 gal (0)
AKC Corporation	Tank 9	None	Pressure 0	Normal	100 PIA	0.0000 gal (0)
AKC Corporation	Tank 10	None	Pressure 0	Normal	100 PIA	0.0000 gal (0)
AKC Corporation	Tank 11	None	Pressure 0	Normal	100 PIA	0.0000 gal (0)
AKC Corporation	Tank 12	None	Pressure 0	Normal	100 PIA	0.0000 gal (0)
AKC Corporation	Tank 13	None	Pressure 0	Normal	100 PIA	0.0000 gal (0)
AKC Corporation	Tank 14	None	Pressure 0	Normal	100 PIA	0.0000 gal (0)
AKC Corporation	Tank 15	None	Pressure 0	Normal	100 PIA	0.0000 gal (0)
AKC Corporation	Tank 16	None	Pressure 0	Normal	100 PIA	0.0000 gal (0)
AKC Corporation	Tank 17	None	Pressure 0	Normal	100 PIA	0.0000 gal (0)
AKC Corporation	Tank 18	None	Pressure 0	Normal	100 PIA	0.0000 gal (0)
AKC Corporation	Tank 19	None	Pressure 0	Normal	100 PIA	0.0000 gal (0)
AKC Corporation	Tank 20	None	Pressure 0	Normal	100 PIA	0.0000 gal (0)
AKC Corporation	Tank 21	None	Pressure 0	Normal	100 PIA	0.0000 gal (0)
AKC Corporation	Tank 22	None	Pressure 0	Normal	100 PIA	0.0000 gal (0)
AKC Corporation	Tank 23	None	Pressure 0	Normal	100 PIA	0.0000 gal (0)
AKC Corporation	Tank 24	None	Pressure 0	Normal	100 PIA	0.0000 gal (0)
AKC Corporation	Tank 25	None	Pressure 0	Normal	100 PIA	0.0000 gal (0)
AKC Corporation	Tank 26	None	Pressure 0	Normal	100 PIA	0.0000 gal (0)
AKC Corporation	Tank 27	None	Pressure 0	Normal	100 PIA	0.0000 gal (0)
AKC Corporation	Tank 28	None	Pressure 0	Normal	100 PIA	0.0000 gal (0)
AKC Corporation	Tank 29	None	Pressure 0	Normal	100 PIA	0.0000 gal (0)
AKC Corporation	Tank 30	None	Pressure 0	Normal	100 PIA	0.0000 gal (0)
AKC Corporation	Tank 31	None	Pressure 0	Normal	100 PIA	0.0000 gal (0)
AKC Corporation	Tank 32	None	Pressure 0	Normal	100 PIA	0.0000 gal (0)
AKC Corporation	Tank 33	None	Pressure 0	Normal	100 PIA	0.0000 gal (0)
AKC Corporation	Tank 34	None	Pressure 0	Normal	100 PIA	0.0000 gal (0)
AKC Corporation	Tank 35	None	Pressure 0	Normal	100 PIA	0.0000 gal (0)
AKC Corporation	Tank 36	None	Pressure 0	Normal	100 PIA	0.0000 gal (0)
AKC Corporation	Tank 37	None	Pressure 0	Normal	100 PIA	0.0000 gal (0)
AKC Corporation	Tank 38	None	Pressure 0	Normal	100 PIA	0.0000 gal (0)
AKC Corporation	Tank 39	None	Pressure 0	Normal	100 PIA	0.0000 gal (0)
AKC Corporation	Tank 40	None	Pressure 0	Normal	100 PIA	0.0000 gal (0)
AKC Corporation	Tank 41	None	Pressure 0	Normal	100 PIA	0.0000 gal (0)
AKC Corporation	Tank 42	None	Pressure 0	Normal	100 PIA	0.0000 gal (0)
AKC Corporation	Tank 43	None	Pressure 0	Normal	100 PIA	0.0000 gal (0)
AKC Corporation	Tank 44	None	Pressure 0	Normal	100 PIA	0.0000 gal (0)
AKC Corporation	Tank 45	None	Pressure 0	Normal	100 PIA	0.0000 gal (0)
AKC Corporation	Tank 46	None	Pressure 0	Normal	100 PIA	0.0000 gal (0)
AKC Corporation	Tank 47	None	Pressure 0	Normal	100 PIA	0.0000 gal (0)
AKC Corporation	Tank 48	None	Pressure 0	Normal	100 PIA	0.0000 gal (0)
AKC Corporation	Tank 49	None	Pressure 0	Normal	100 PIA	0.0000 gal (0)
AKC Corporation	Tank 50	None	Pressure 0	Normal	100 PIA	0.0000 gal (0)

Tank Schedule

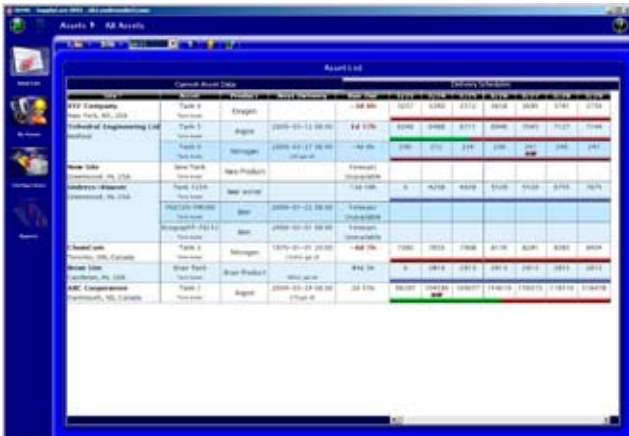
Allows user to view crucial data for a group of tanks. View the following data:

- A list of tanks organized by user selectable criteria
- Currently scheduled refill date, time, and volume to be filled for each tank
- Amount of time (in days & hours) before the tank is empty
- 7 day forecast that can be scrolled ahead to display tank data for a 3 month period
- Scheduled delivery total for each day
- Current inventory total for each day



Alarm Emails

- Software features a dial-out system that contacts designated operators by e-mail in the event that an alarm has gone unacknowledged for a specific period of time. Four alarm points can be set to send alarm emails: high level, reorder, critical and empty.



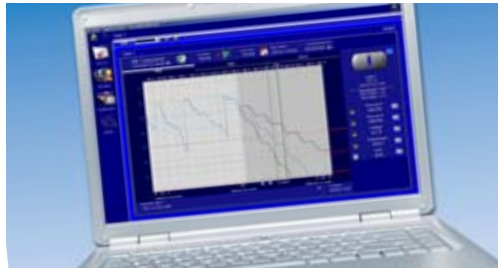
Scheduled delivery page

- Scheduled deliveries can be shown on the website so your customer will see that they can expect a delivery
- You can sort and see an overview of sites with deliveries and when the optimum day it would be to schedule the delivery based on past usage



Tank inspector page

- Capable of viewing multiple tank pictures and levels on one page (can also have multiple pages)
- Allows quick visual representation of tank levels that are viewed frequently
- Individuals can create their own set of tanks that they want to view



Remote Sentry™

Inventory Management Program

Remote Sentry handles your inventory data so that you can fully concentrate on your business. Remote Sentry is one more reason for you to work with Univar for all your chemicals and related services.

Talk to your local Univar salesperson about how Remote Sentry can start working for you today.

